



## Holter System :



**All Items include in one set:**

Item	Quantity (pc)
Security Key/Analyze Software	1
Manual	1
Disposable Electrode	1
Holter Recorder	1
Holter Cable	1
Pouch	1
Manual	1
SSS Cable	1

### Models:

**DMS300-3A:**

**3 channel, record max to 7 days**

**DMS300-4A:**

**12 channel & 3 channel, record max to 3 days**

**DMS300-4AL**

**12 channel & 3 channel , record 24 hours,with LCD Screen**

### Details

**Multi-days Holter Recorders (3-7 days)**

Model: DMS300-3A	Model: DMS300-4A	Model: DMS300-4AL
<b>Functions &amp; Features:</b>	<b>Functions &amp; Features:</b>	<b>Functions &amp; Features:</b>
Multi-day Holter recorder up to 6 days	Multi-day Holter recorder up to 3 days	Holter recorder up to 24hours
256-4096 Hz sample rate	256-4096 Hz sample rate	Read 4096 Hz, write 128 Hz



Holter recorder's playback time is less than 3 minutes	Holter recorder's playback time is less than 3 minutes	Holter recorder's playback time is less than 2 minutes
1 AAA battery power supply	1 AAA battery power supply	1 AAA attery power supply
Standard 3 channel Holter recorder (5 or 7 leads wires)	Standard 12 channel Holter recorder (10-lead wires)	Standard 3 and 12 channel Holter recorder(7 leads and 10 leads wire)
Event button to record patient abnormal events	Event button to record patient abnormal events	Event button to record patient abnormal events
Isolation USB playback cable to view ECG wave in real time	Isolation USB playback cable to view ECG wave in real time	LCD Screen to see real-time ECG Wave, heart Rate, Time, power status, Ecg cable status, Respiration Rate
Connect Holter recorder with PDA by USB playback cable to view & print ECG wave in real time	Connect Holter recorder with PDA by USB playback cable to view & print ECG wave in real time	Separate SAECG file recording at 1024 Hz and 16-bit.
Support SAECG (VLP) function		Support SAECG (VLP) function
Portable, environment friendly design	Portable, environment friendly design	Portable, environment friendly design
<b>Technical specification:</b>	<b>Technical specification:</b>	<b>Technical specification:</b>
Lead: Standard 3 leads(5 or 7 leads wires)	Lead: Standard 12 leads(10 leads wires)	Lead: Standard 12 leads(10 leads wires) Standard 3 leads(7 leads wires)
Resolution: 8 or 12 bits	Resolution: 8 or 12 bits	16 bits
Sampling rate: 256-4096Hz read, write 128Hz	Sampling rate: 256-4096Hz read, write 128Hz	Sampling rate: 4096-10240 read , write 128 Hz
Memory: ≥256MB	Memory: ≥256MB	4GB

Playback time: ≤ 3 minutes	Playback time: ≤ 3 minutes	Playback time: ≤ 3 minutes
Record time: Multi days	Record time: Multi days	CMRR: > 60 dB
ECG data deletion: Two deletion methods: Inserts the new battery to delete the ECG files, USB playback deletes the ECG files	ECG data deletion: Two deletion methods: Inserts the new battery to delete the ECG files, USB playback deletes the ECG files	ECG data deletion: Two deletion methods: Inserts the new battery to delete the ECG files, USB playback deletes the ECG files Or use card reader to read memery card
Power supply: 1 AAA alkaline battery	Power supply: 1 AAA alkaline battery	Power supply: 1 AAA alkaline battery
Dimensions: 88×55mm×21mm	Dimensions: 88×55mm×21mm	
Weight: ≤ 100 grams	Weight: ≤100 grams	



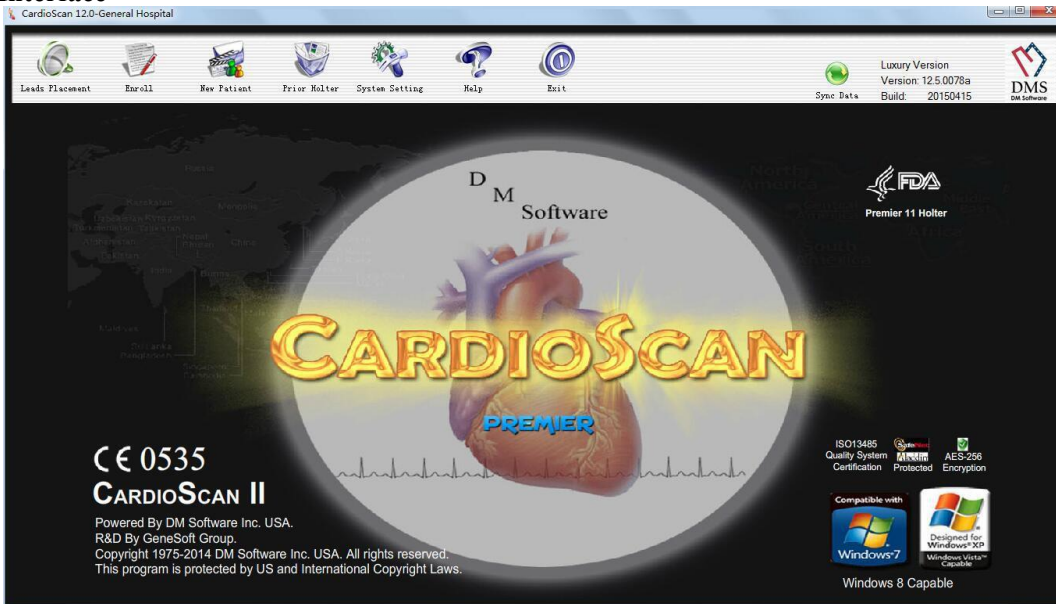
## Features of Holter System ( Software)

1. Original color printed report, can print color printed ECG reports.
2. Support USA HL7interface, support DICOM port, support Germany GDT format, support Microsoft SQL network interface, compatible with network protocol in future.
3. Support different doctors' custom conclusion, and can read out Automatically.
4. Support doctors' digital signature
5. Support self-designed head letter in the first page of report, hospitals can design their different special head letter.
6. Support Holter Satellite System, can set up analysis center at central hospitals.
7. MEGA Scan color printed and arhythmias color marked
8. Patients' information enroll function, can pre-record the patients' information into the recorder, to avoid data mix up.
9. Pacemaker page scan function, can look through the patients' pacemaker data quickly.
10. Auto Baseline Straightening fuction during the whole period
11. Auto atrial fibrillation and atrial flutter analysis.
12. Auto save various arhythmias ECG sections.
13. Strong analysis function of ST, 12 lead ST tendency chart comparison, doctors can re-analysis any ST section, Lively 3D ST graph apply you a clear idea about the Cardiogram.
14. QT/QTc Analysis Validation Program.
15. Unique DMS Function Sleep Apnea Monitoring with detection of SAS episodes.
16. High-performance advanced pacemaker analysis fuction, fit to VVI AAI DDD etc various types of pacemakers. Auto notify and analysis the fail pace-making, atrioventricular sequential pacing, ventricular pacing, ventricular fusion wave etc.
17. PDF Outputs for Immediate E-Mail achieve the ECG data and reports share to different doctors and carry out remote consultation.
18. Strong data base management function, can use different terms to complete data's retrieval and accessibility, PDF Outputs for EMR (Electronic Medical Records)
19. Support many countries languages like: Chinese, English, French, German, Spanish, Russian, Italian, Portuguese, Hungarian, Polish etc.
20. Newest Window 7/Vista/XP compatible.



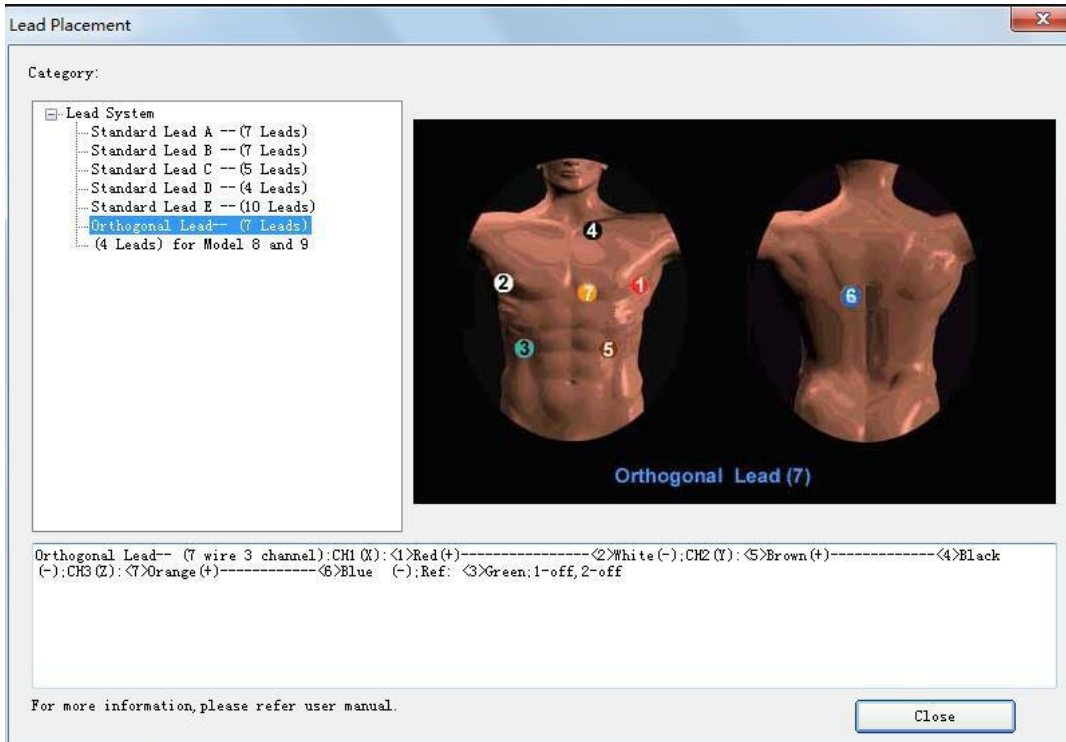
## A. Basic Block

### 1. Interface



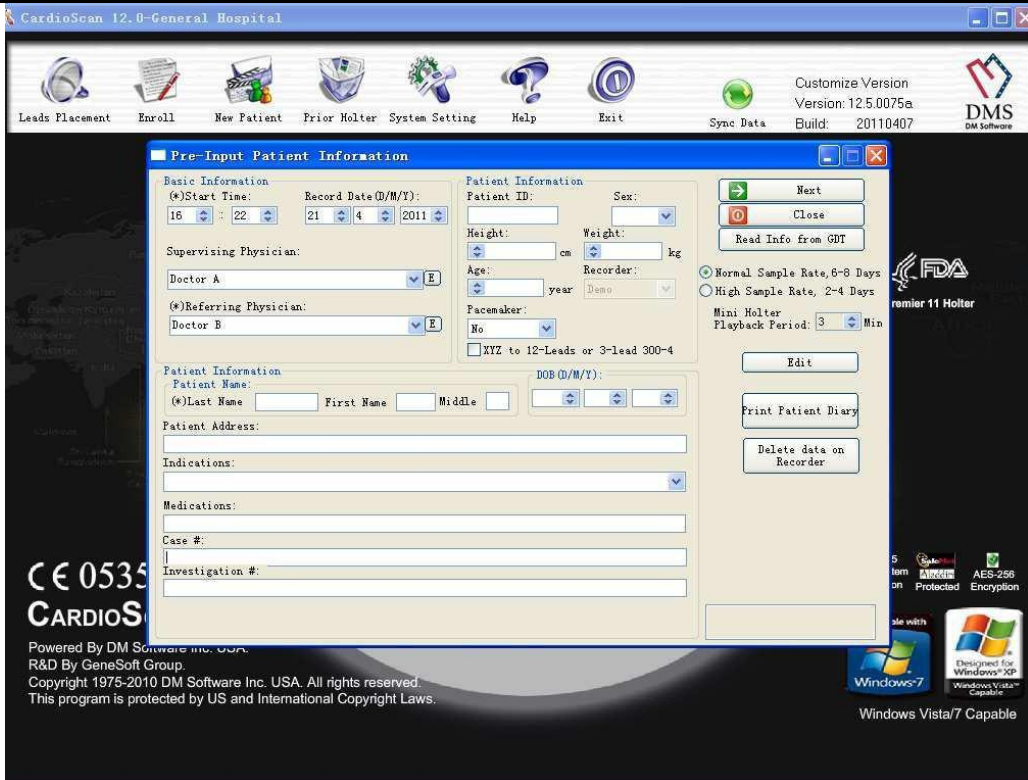
**Our Software Engineer Team will maintain and upgrade the software at regular intervals, make sure you can use the most advanced technology and stable software.**

### 2. Leads Placement



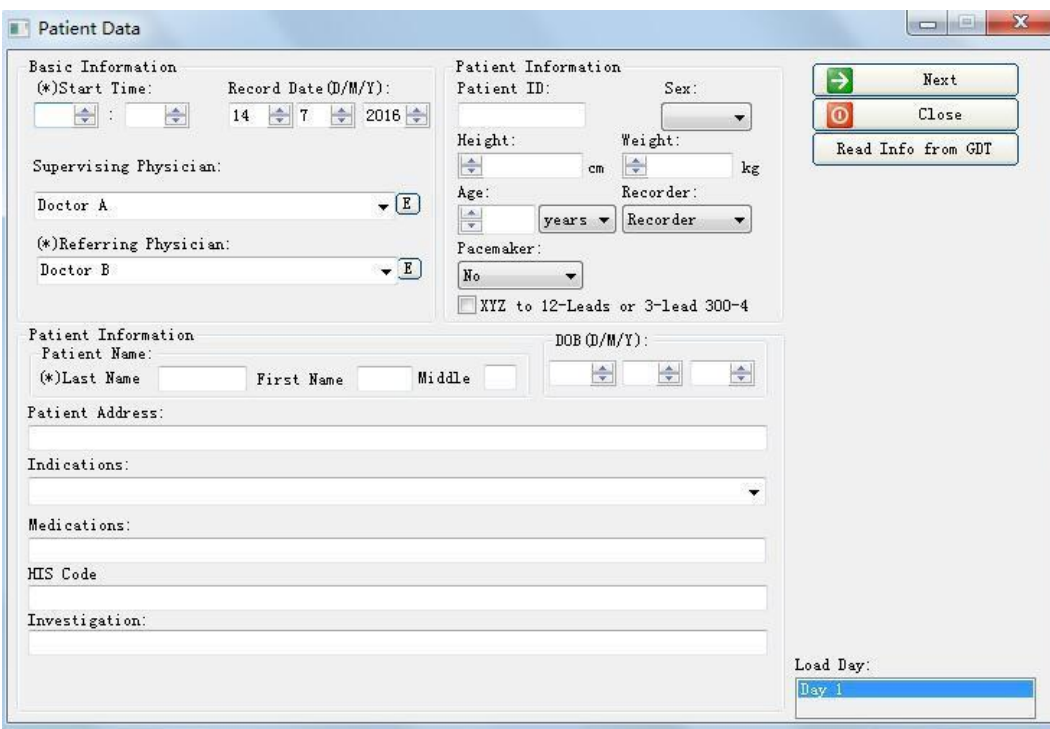
**There are several Standards for doctor to choose, you can choose the suitable one for your patients.**

### 3. Enroll



**Our System can connect to the Hospital Information Systems, different department can share the information, Enroll is a special function for hospital used.**

#### 4. New Patient



**Before the testing, doctor need to type the patient's information into the system, to set up a profile, all the patients data will be stored in the hospital system.**





**Prior Holter**

Patient Database

No.	Name	Test Date	Load Date	Room	Bed	ID#:	Supervising...	Referring	Sex	Type
1	dfdf	03:00 28-10-2010	10:04 29-10				Doctor A	Doctor B		3-Leads
2	ddd	01:00 08-09-2010	16:19 09-09				Doctor A	Doctor B		3-Leads Pacemaker
3	dfdf	02:00 01-08-2010	12:43 02-08				Doctor A	Doctor B		3-Leads
4	ddd	01:00 01-08-2010	12:43 02-08				Doctor A	Doctor B		3-Leads
5	bgv	01:00 01-08-2010	12:28 02-08				Doctor A	Doctor B		3-Leads

Total Patient: 5  
 Used Disk Space of C:, 12.08 GB of 39.06 GB. 31.0%

Report Not Ready.  
 Report Ready for Printing.  
 Report Already Printed.

Compact patient file after this amount of time: Never

Search Name: ID: Search Now Clear Access Print List Import Patient Compact File Online Holter  
 Conclusi: Delete Print Report Export Patient Close

## 5. System Setting

**CardioScan 12.0-General Hospital**

Leads Placement Enroll New Patient Prior Holter System Setting Help Exit Sync Data Customize Version Version: 12.5.0075a Build: 20110407 DMS DM Software

**System Setting**

Basic Parameter Facility Information Other A Other B

Holter Scan: 24 Hours	Auto Report: No	Manual Set ST: Yes
SVE Premature%: 25	Pause Time: 2.5	NIS: No
FD with Analysis: No	ST Mode: Absolute ST	FD Hour Per Page: 1 Hour
Raw Data: C:\Carsel2\	ID Create: Manual	Date Style: d/M/yy
Language: English	Weight: kg	Height: cm
Minimum HR: 4 Intervals	Maximum HR: 4 Intervals	Filter: Yes
ST Analysis: ST Point	Default ECGStrip: OFF	Conclusion Print: Standard
ECGStrip Display: Center	Print Page Number: Show	Sub-Template: Single

ISO13485 Quality System Certification  
 Premier 11 Holter  
 AES-256 Encryption  
 Compatible with Windows-7, Windows Vista Capable, Windows Vista/7 Capable

CE 0535  
**CARDIOSCAN II**  
 Powered By DM Software Inc. USA.  
 R&D By GeneSoft Group.  
 Copyright 1975-2010 DM Software Inc. USA. All rights reserved.  
 This program is protected by US and International Copyright Laws.

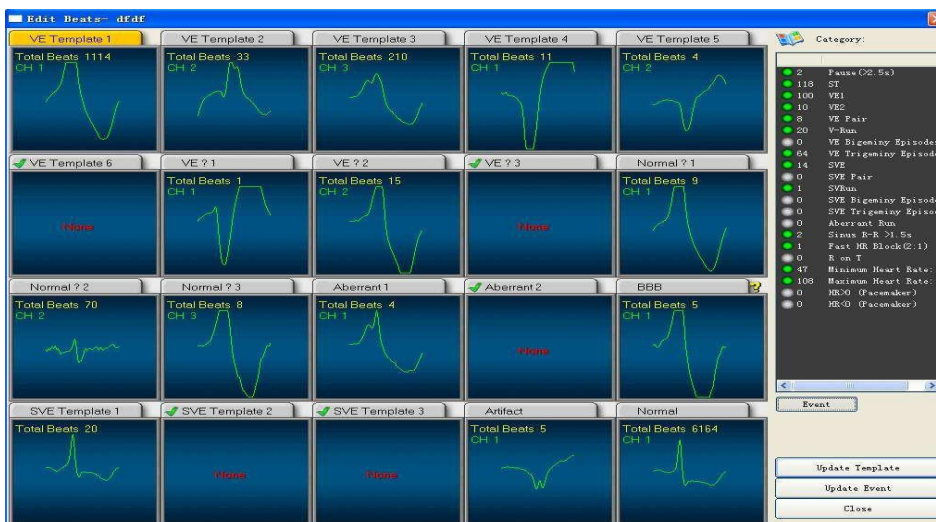
**You can set you hospital information, system language and report mode and special demands in the system setting.**

## B. Data Access Functions

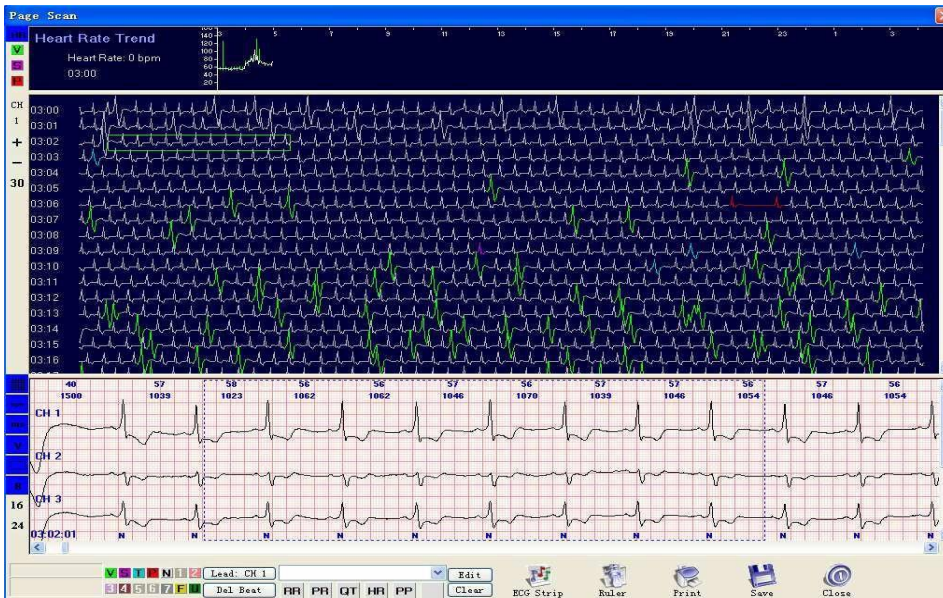
Edit, Page Scan, Mega Scan, QT Validation, A-Fib/Flu, HRV, ST Scan, ECG Strip, Hourly, Report, Re-Analy



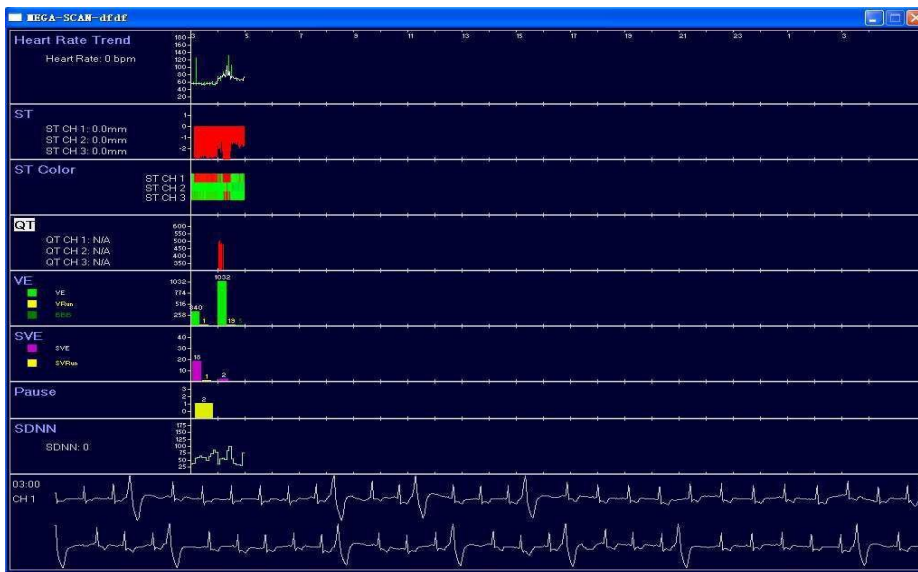
### 1. Edit



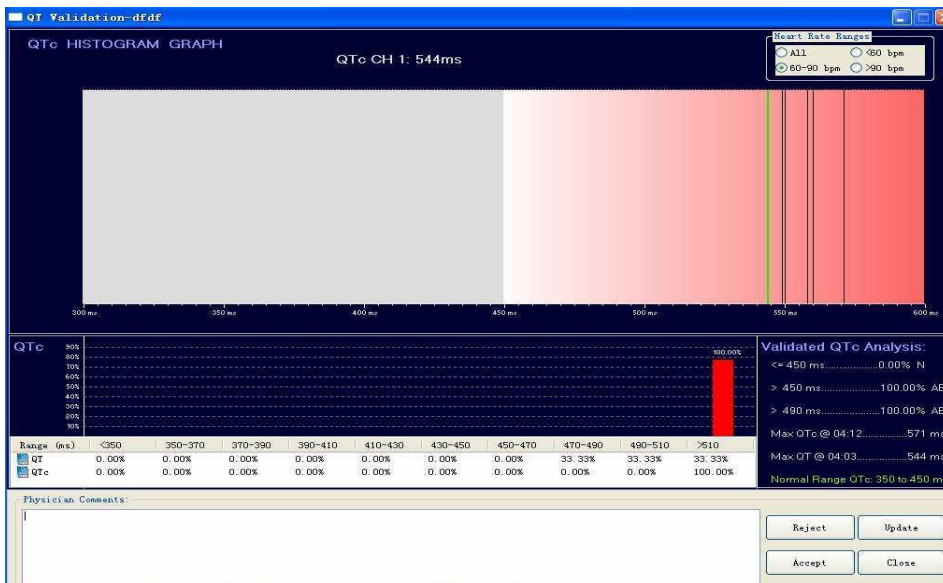
### 2. Page Scan



### 3. Mega Scan

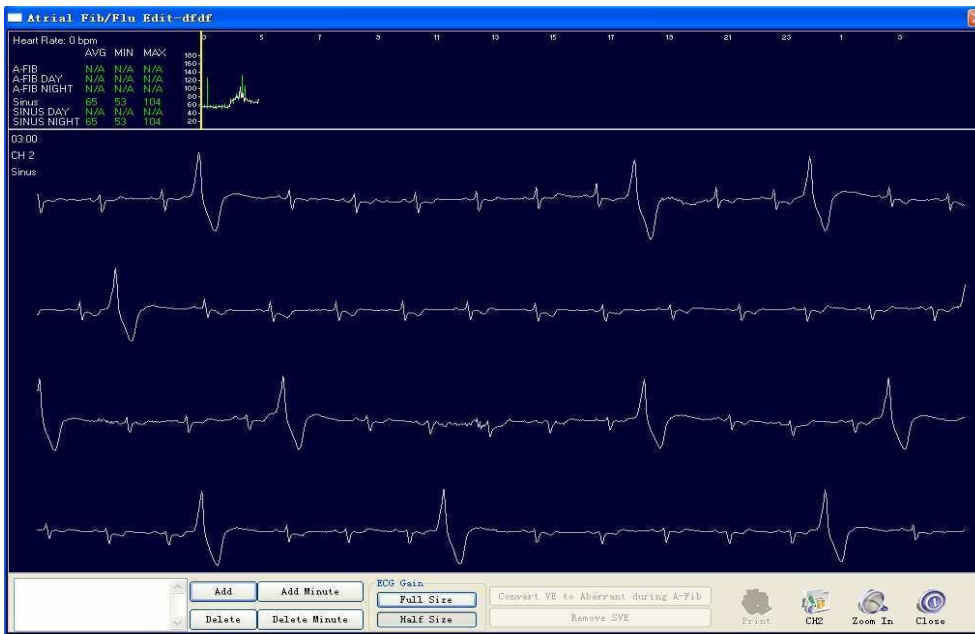


### 4. QT Validation

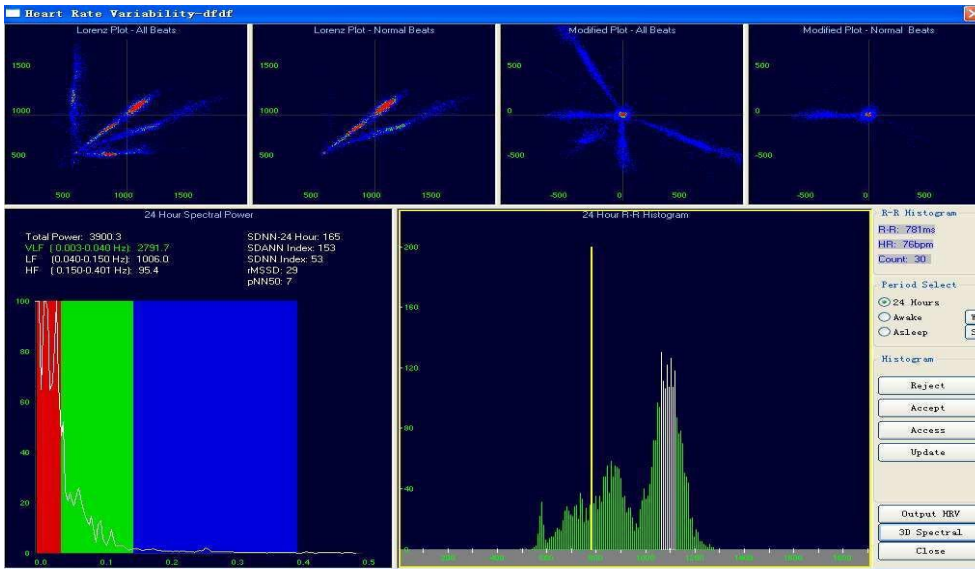


### 5. Atrial Fib





## 6. HRV



## 7. ST Scan



## 8. ECG Strip



ECG STRIP-dfdf

Patient Diary Event:

No.	Symptoms	Time
1	Event1	
2	Event2	
3	Event3	
4	Event4	
5	Event5	
6	Event6	
7	Event7	
8	Event8	
9	Event9	
10	Event10	
11	Event11	
12	Event12	
13	Event13	
14	Event14	
15	Event15	
16	Event16	
17	Event17	
18	Event18	
19	Event19	
20	Event20	
21	Event21	
22	Event22	
23	Event23	
24	Event24	
25	Event25	
26	Event26	
27	Event27	
28	Event28	
29	Event29	
30	Event30	
31	Event31	
32	Event32	
33	Event33	
34	Event34	
35	Event35	
36	Event36	

Select Time To View Strips

Hour: 3 Minute: 2

Print Options

Print Selected Saved Strips

Print All Saved Strips

Channel:  3 CH  12 CH

Buttons: Save Symptoms, View Symptoms, Save Events, View, Output, Output Raw ECG Data, Review ECG, Print, Delete Selected Strip, Close

## 9.Hourly

24 Hour Tabular Summary- 123 123

Time	Total Beat	Avg HR	Min HR:	Max HR:	ST-1	ST-2	ST-3	VE	VE Pair	V-Run	Pause	SVE	SV-Run	SV-Bigemir
6:06	3028	56	47	64	0.0	-0.9	-4.8	319	11	1	2	16	1	0
7:00	4410	73	49	107	3.9	-4.3	-7.0	1075	52	13	0	9	0	0
8:00	417	70	59	81	4.1	-1.3	-5.1	85	0	2	0	0	0	0
9:00	0	0	0	0	0.0	0.0	0.0	0	0	0	0	0	0	0
10:00	0	0	0	0	0.0	0.0	0.0	0	0	0	0	0	0	0
11:00	0	0	0	0	0.0	0.0	0.0	0	0	0	0	0	0	0
12:00	0	0	0	0	0.0	0.0	0.0	0	0	0	0	0	0	0
13:00	0	0	0	0	0.0	0.0	0.0	0	0	0	0	0	0	0
14:00	0	0	0	0	0.0	0.0	0.0	0	0	0	0	0	0	0
15:00	0	0	0	0	0.0	0.0	0.0	0	0	0	0	0	0	0
16:00	0	0	0	0	0.0	0.0	0.0	0	0	0	0	0	0	0
17:00	0	0	0	0	0.0	0.0	0.0	0	0	0	0	0	0	0
18:00	0	0	0	0	0.0	0.0	0.0	0	0	0	0	0	0	0
19:00	0	0	0	0	0.0	0.0	0.0	0	0	0	0	0	0	0
20:00	0	0	0	0	0.0	0.0	0.0	0	0	0	0	0	0	0
21:00	0	0	0	0	0.0	0.0	0.0	0	0	0	0	0	0	0
22:00	0	0	0	0	0.0	0.0	0.0	0	0	0	0	0	0	0
23:00	0	0	0	0	0.0	0.0	0.0	0	0	0	0	0	0	0
0:00	0	0	0	0	0.0	0.0	0.0	0	0	0	0	0	0	0
1:00	0	0	0	0	0.0	0.0	0.0	0	0	0	0	0	0	0
2:00	0	0	0	0	0.0	0.0	0.0	0	0	0	0	0	0	0
3:00	0	0	0	0	0.0	0.0	0.0	0	0	0	0	0	0	0
4:00	0	0	0	0	0.0	0.0	0.0	0	0	0	0	0	0	0
5:00	0	0	0	0	0.0	0.0	0.0	0	0	0	0	0	0	0
6:00	0	0	0	0	0.0	0.0	0.0	0	0	0	0	0	0	0
Totals	7855	66	47	107	4.1	-4.3	-7.0	1479	63	16	2	25	1	0

Buttons: Save, Zero, Close, PageScan

## 10. Report

Reports-dfdf

Page Print:

Holter ECG Report Summary

24 Hour Trends Report

ST Analysis

QTc and QT Analysis

4-FTB

Heart Rate Variability Report

HRV Poincare and 3D Power

ECG Strip

Full Disclosure

Sleep Apnea 24-Hour Trends

Spectral / Multi-Parameter Correlati

Sleep Apnea "At Risk" Form

R-R Full Disclosure

R-N Full Disclosure

ECG Strip:  3 CH  12 CH  VEG  Add-on CH

Full Disclosure:  CH 1  CH 2  CH 3

Print Full Disclosure:

Buttons: Print, Close, ASCII, PDF+EICOM, Write to GDT (O), Write to HL7

Physician Comments:

The average heart rate was 65. The minimum heart rate was 47 at 03:51. The maximum heart rate was 108 at 04:20. Pauses greater than 2.5 seconds were 2. Ventricular ectopy was 1372, with 20 V-Runs and 8 V-Pairs. Ventricular Bigeminy events were 0 and Ventricular Trigeminy events were 64. Supraventricular ectopy was 20, with 1 SV-Runs and 0 SV-Pairs. Supraventricular Bigeminy events were 0 and Supraventricular Trigeminy events were 0. Total A-Fib (Flu) were 0 Minute 0 Seconds. ST episode minutes totaled 118. The maximum Absolute ST change was -7.0 and occurred at 04:20. The patient pressed the symptom event button 0 times on the Holter recorder.

Buttons: Speak, Show ECG Strip, Insert Above Text, Reset Auto Comments, Edit Text Database, Save Comment Changes, Modify Patient's Demographic Info, Custom Physician Comments, Auto



DMS Co., Ltd Phone: 18825188139 Fax: 18825188139			
Recording Start Date 4/5/2016	HOLTER ECG REPORT SUMMARY	Recording Start Time 6:06	
Patient Name: 123 123	ID#: _____		
Address: _____	Age: _____ DOB: _____ Sex: _____		
Pacemaker: None	Weight: _____ Height: _____		
Supervising Physician: Doctor A	Referring Physician or Facility: Doctor B		
Indications: _____			
Medications: _____			
<b>HEART RATE</b>	<b>VENTRICULAR ECTOPY</b>	<b>HEART RATE VARIABILITY</b>	
Minimum HR-4 Intervals: 47 bpm at 6:57	VE Total: 1479	SDNN-24 Hour: 156	
Maximum HR-4 Intervals: 107 bpm at 7:26	V-Pair Total: 63	SDANN Index: 139	
Average HR-24 Hours: 66 bpm	V-Run Total: 16 (总计心搏 6)	SDNN Index: 57	
Minimum HR-Hourly: 56 bpm at 6:00	Longest V-Run: 63	rMSSD: 38	
Maximum HR-Hourly: 78 bpm at 7:00	Maximum HR V-Run: 5心搏192 bpm (07:49:29)	pNN50: 13	
Analyzed Beats: 7855	Minimum HR V-Run: 3心搏9 bpm (07:32:27)	Spectral Power-24 Hour: 3164.7	
Analyzed Minutes: 119	VE's per 1000 per Hour: 189.81/739.50	Min Spectral Power Hour: 1417.4	
ECG Monitoring Period: 2小时,0分钟	Ventricular R on T: 无	Max Spectral Power Hour: 3567.5	
<b>ST SEGMENT ANALYSIS</b>	<b>SUPRAVENTRICULAR ECTOPY</b>	<b>PAUSES</b>	
Total ST Minutes CH1: 0	SVE Total: 25	Pauses in Excess of 2.50 sec: 2	
Total ST Minutes CH2: 11	SVE Pair Total: 0	Max Pause: 3.38 sec at 06:36	
Total ST Minutes CH3: 0	SV-Run Total: 1 (总计心搏 0)	QT: _____	
Max Abs. ST Depression: -4.3 于 07:27@CH2	Longest SV-Run: 6心搏93 bpm (06:43:10)	Max QTc: 295 ms (正常)	
Max Abs. ST Elevation: 无	Maximum HR SV-Run: 6心搏93 bpm (06:43:10)	Max QTc: 323 ms	
Max ST Episode: 71 分钟于 6:06	SVE's per 1000 per hour: 3.21/12.50	Time of Max QTc: 于 07:13, HR 81 bpm, 1	
Max HR in ST Episode: 105	Total Aberrant Beats/Runs: 0/0	IdicV: _____	
	Atrial Fib/Flutter: 0.0%		
<b>SIGNIFICANT ECG EVENTS</b>			
<b>CONCLUSIONS</b>			
平均心率为 66 bpm, 分析的心搏数为 7855个, 最慢心率为 47 bpm, 发生于 06:57, 最快心率为 107 bpm 发生于 07:26, 大于 2.50 秒的停搏是 2个, 宽性早搏有1479个,其中有1287个单发宽早,63次成对宽早和16阵宽速,有0阵宽速			
ECG 监测期 2小时,0分钟, 分析的心搏数为 7855个, 分析的心搏数为 7855个, 分析的心搏数为 7855个, 分析的心搏数为 7855个			

Our Software will analyze the data and give out the report directly, doctor can make some adjustments on the report.

